



What can be recycled?



### PAPER



#### Yes

- ✓ fine papers
- ✓ newspapers/flyers
- ✓ catalogues
- ✓ envelopes
- ✓ softcover books
- ✓ junk mail
- ✓ all writing paper

#### No

- ✗ Christmas wrap
- ✗ hardcover books
- ✗ carbon paper
- ✗ blueprints

### STEEL CANS



#### Yes

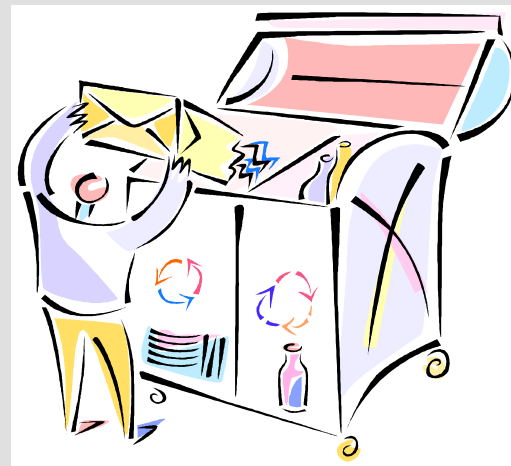
- ✓ clean, uncrushed food cans

#### No

- ✗ propane tanks
- ✗ batteries
- ✗ appliances
- ✗ bicycles
- ✗ ballasts
- ✗ paint cans



## Landfill Sites Recycling Depots



P.O. Box 10, 4569 Oliver Road  
Murillo, ON P0T 2G0  
Tel: (807) 935-2613  
Website: [www.oliverpaipoonge.on.ca](http://www.oliverpaipoonge.on.ca)



What can be recycled?



### PLASTIC BOTTLES



#### Yes\*

- ✓ #1 plastic PET—pop bottles, water bottles
- ✓ #2 plastic PET—household cleaner bottles e.g. shampoo, dish soap

*\*check bottom of bottle*

#### No

- ✗ #3—7 plastics
- ✗ shopping bags
- ✗ plastic wrap
- ✗ baggies
- ✗ bubble wrap
- ✗ Styrofoam
- ✗ plastic tubs & lids
- ✗ containers with hazardous waste e.g. motor oil

### MILK CARTONS/TETRA PAKS



#### Yes

- ✓ milk cartons
- ✓ juice boxes
- ✓ tetra or gable top containers

#### No

- ✗ soap boxes
- ✗ waxed cardboard



What can be recycled?



### POP CANS



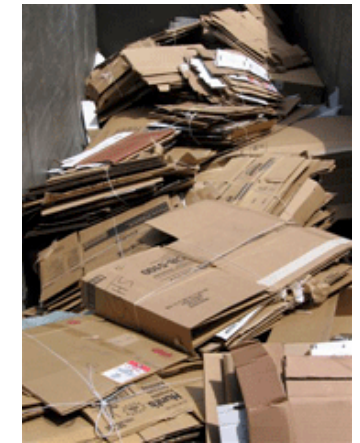
#### Yes

- ✓ empty, uncrushed beverage cans

#### No

- ✗ items other than beverage containers

### CARDBOARD



#### Yes\*

- ✓ corrugated cardboard
- ✓ boxboard i.e. cereal boxes
- ✓ file folders
- ✓ business cards
- ✓ clean pizza boxes

*\* please flatten*

#### No

- ✗ Styrofoam or other packaging
- ✗ waxed soap/detergent or produce boxes
- ✗ cardboard with Styrofoam or plastic attached

## Rules and Regulations

- All users must be residents of Oliver Paipoonge
- Residents must have a landfill sticker visible in window of their vehicle. Landfill stickers can be obtained from the Municipal Office.
- Prohibited items:
  - × Liquid wastes, e.g. waste oils, flammables, paints, sewage
  - × Tires
  - × Animal carcasses
- Burning of waste prohibited
- No smoking
- No scavenging
- Obey posted speed limits
- Residents must deposit waste and recyclables in designated areas:
  - ✓ Household garbage
  - ✓ Recycling
  - ✓ Metal
  - ✓ **Local** building materials, construction and demolition debris
  - ✓ Brush and old lumber for burn pile

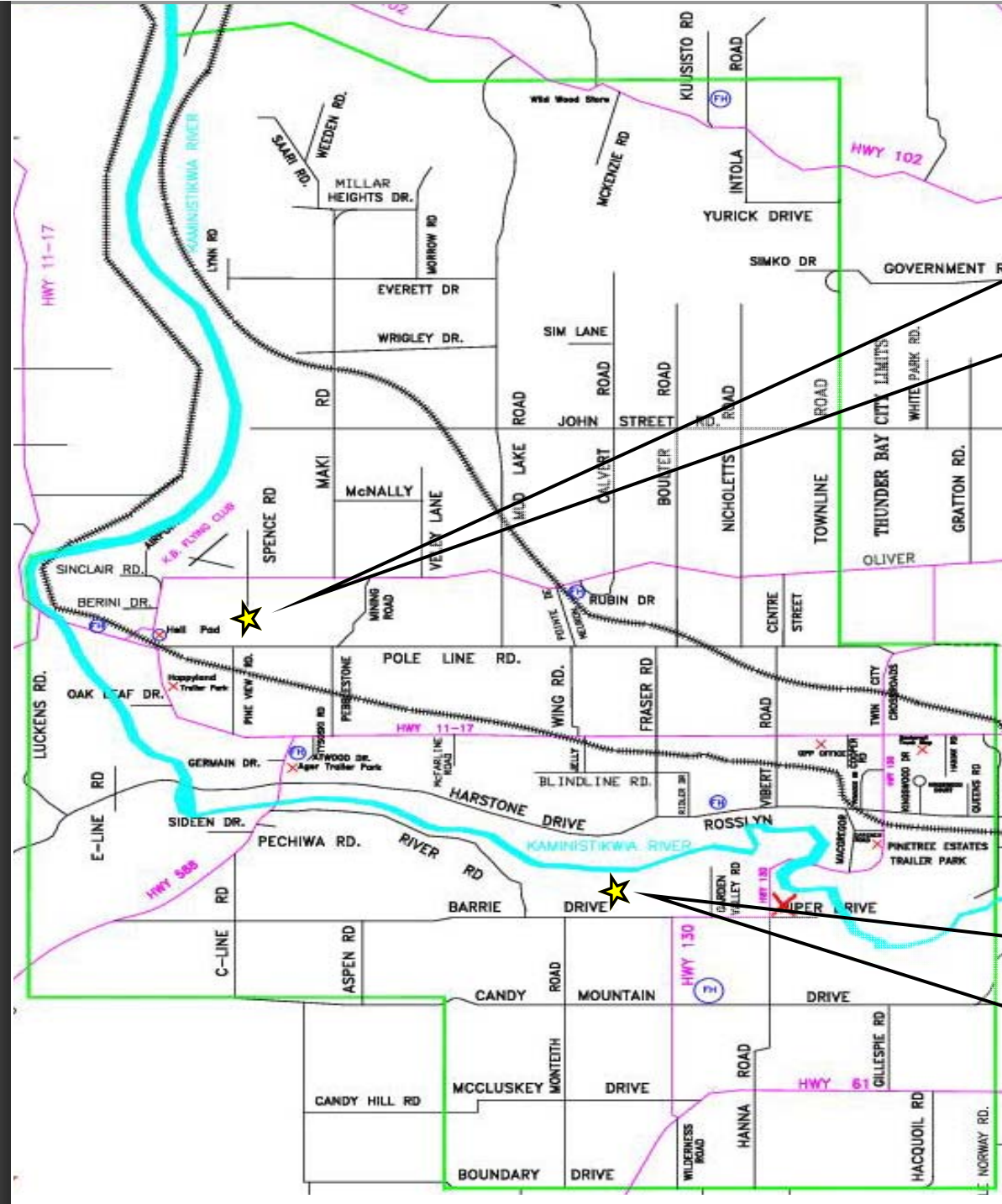
## Disposal of refrigerators, freezers, air conditioners and dehumidifiers:

Residents must obtain a tag from the Municipal Office for a fee of **\$45** per item before it can be brought to the Landfill Site.

## Tipping Fees

Size of Truckload	Non-Combustible Residential Waste (per load)
Single axel dump (4500 kg+)	\$30
Tandem	\$50
Tri-axel	\$70
Larger than tri-axel	\$90

# Oliver Paipoonge Landfill Sites & Recycling Depots



### North Landfill Site & Recycling Depot

*Spence Road*

Summer Hours (April 1—September 30)  
 Tuesday—12:00 noon to 8:00 pm  
 Saturday—9:00 am to 5:00 pm

Winter Hours (October 1—March 31)  
 Tuesday—12:00 noon to 5:00 pm  
 Saturday—9:00 am to 5:00 pm

### South Landfill Site & Recycling Depot

*Barrie Drive*

Summer Hours (April 1—September 30)  
 Wednesday —12:00 noon to 8:00 pm  
 Saturday—9:00 am to 5:00 pm

Winter Hours (October 1—March 31)  
 Wednesday —12:00 noon to 5:00 pm  
 Saturday—9:00 am to 5:00 pm